

NEW

DIRECT VENT CHIMNEY PRODUCTS



CONVENIENCE

VERSATILITY

FLEXIBILITY



*BURN WITH METAL-FAB....INTRODUCING NEW VERSATILE,
FLEXIBLE & CONVENIENT DIRECT VENT KITS!*

FOR USE WITH DIRECT VENT GAS APPLIANCES

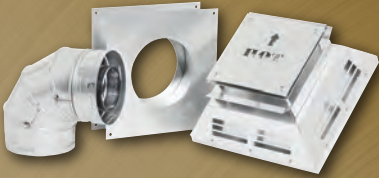
FASTER. SAFER. BETTER.

FASTER. SAFER. BETTER.

NEW

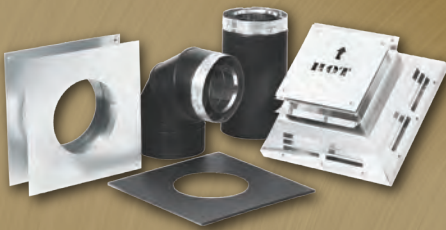
DIRECT VENT CHIMNEY PRODUCTS

HORIZONTAL KIT A (DHTKA)



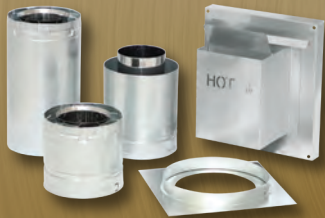
- ▶ 90° ELBOW
- ▶ ADJUSTABLE WALL THIMBLE
- ▶ HORIZONTAL TERMINATION

HORIZONTAL KIT B (DHTKB)



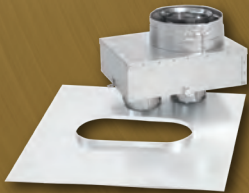
- ▶ 90° ELBOW
- ▶ ADJUSTABLE WALL THIMBLE
- ▶ HORIZONTAL TERMINATION
- ▶ 24" STRAIGHT LENGTH
- ▶ DECORATIVE COVER PLATE

SLIP CONNECTOR KIT (DSLPHTK)



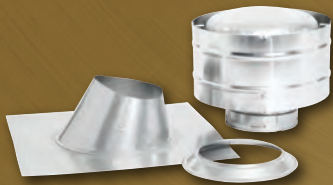
- ▶ 6" STRAIGHT LENGTH
- ▶ ADJUSTABLE SLIP CONNECTOR
- ▶ FIRESTOP
- ▶ ECONOMY HORIZONTAL TERMINATION

VERTICAL KIT (DVLTK)



- ▶ FLAT FLASHING
- ▶ CO-LINEAR TO CO-AXIAL ADAPTER

VERTICAL KIT (DVTK)



- ▶ FLASHING 1/12 - 5/12
- ▶ STORM COLLAR
- ▶ VERTICAL TERMINATION

METAL-FAB MAKES IT EASY....

*Selecting the right products for your job can be costly and time consuming. Metal-Fab offers a **DIRECT VENT KIT** solution for any application to fit your needs. We can save you the time of creating a kit for every installation. Our selection of direct vent kits provides for easy installation, minimizing labor and reducing cost. Metal-Fab provides a complete line of superior quality direct vent products for use with direct vent gas appliances.*

Please contact Metal-Fab for availability and technical assistance.

FEATURES

- ▶ Stainless steel flue is superior to aluminum for high heat applications.
- ▶ Unitized construction eliminates field assembly reducing installation time.
- ▶ Twist-Lock connections with SureLock® eliminates the need for sheet metal screws and sealant.

BENEFITS

- ▶ Adjustable swivel elbow design allows precision pipe section alignment.
- ▶ 1-2 day shipping.
- ▶ 100% order fill, *NO BACKORDERS.*

1-2 DAY SHIPPING • ONE-STOP VENT SHOPPING • 100% ORDER FILL



800-835-2830

P.O. Box 1138
Wichita, Kansas 67201
FAX: (316)-943-2717
info@metal-fabinc.com
www.metal-fabinc.com.com



MADE IN THE U.S.A.

FASTER. SAFER. BETTER.

Form No. L2969-2/18
9765